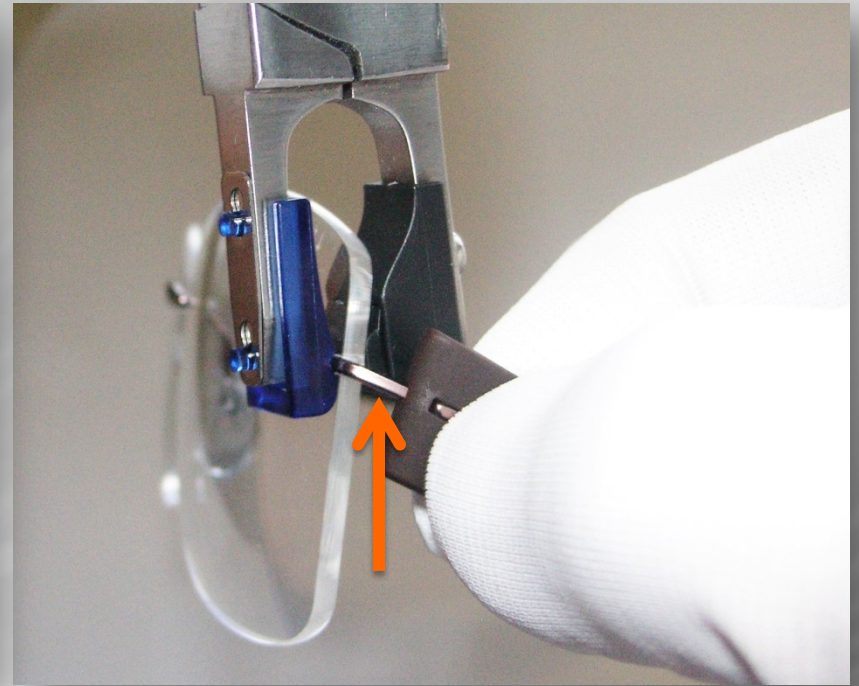
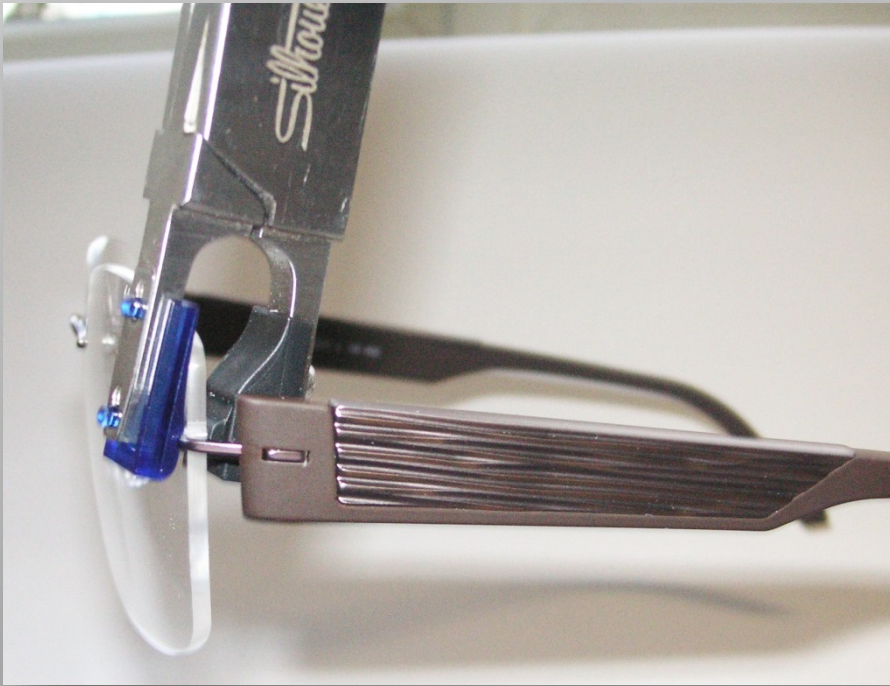




SPX Compose
Technical Instructions

Inclination



1. Hold lens fixation firmly with mounting pliers.
2. Open temple completely.

3. Enclose temple edge firmly and adjust inclination on titanium side part in direction shown.

Adjusting Temple Opening

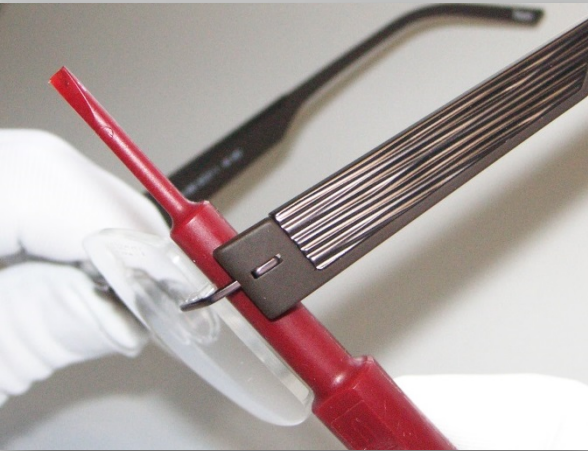
Reduce



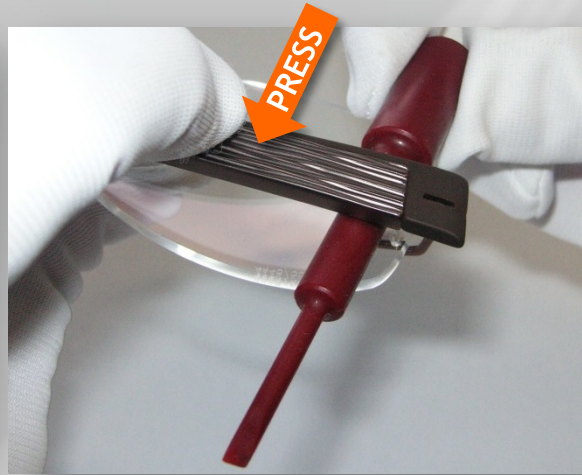
Enlarge



Temple Disassembly



1. Place disassembly tool at hinge to stop. Select diameter of round stick closest to the distance between temple and lens.



2. Close temple and press behind round stick.



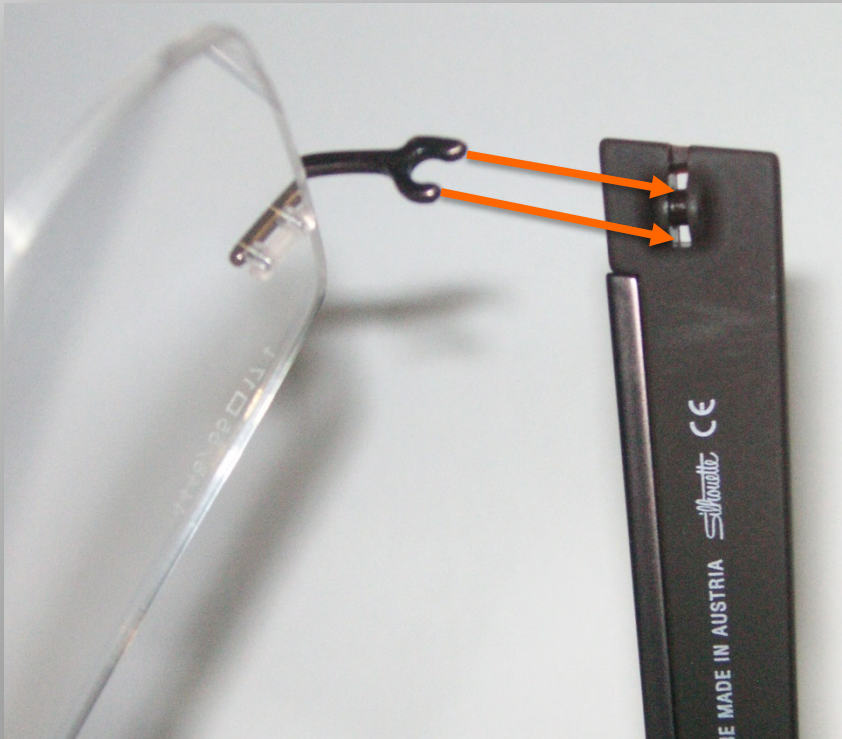
3. Temple will loosen with a click.

Hinge Greasing with Teflon

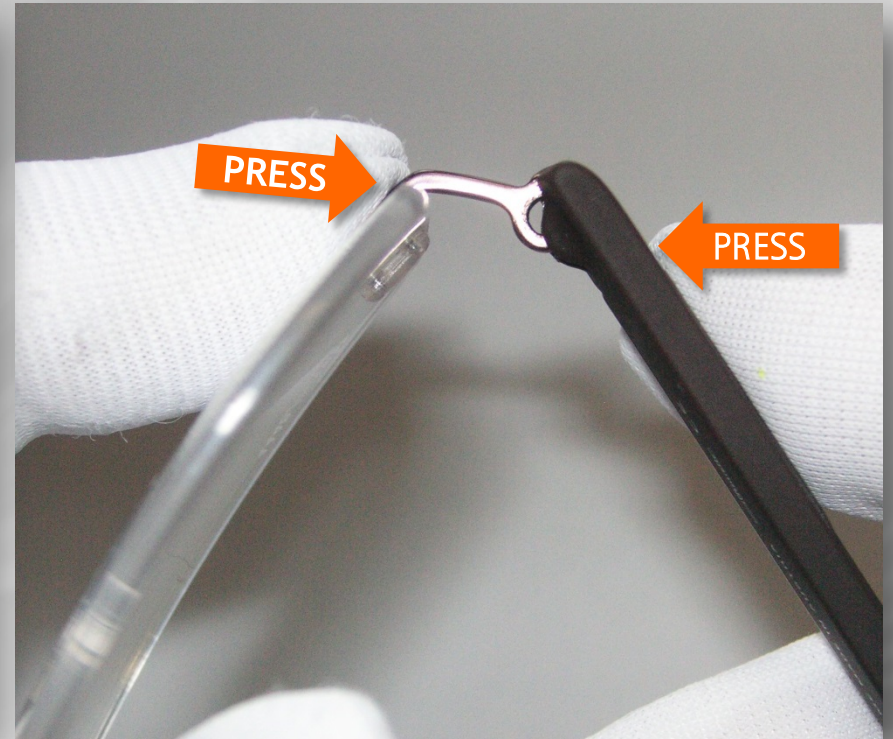


After cleaning, grease inside loop of hinge with Teflon high precision lubricant from mounting box P 0033. Ready to mount temple.

Temple Assembly

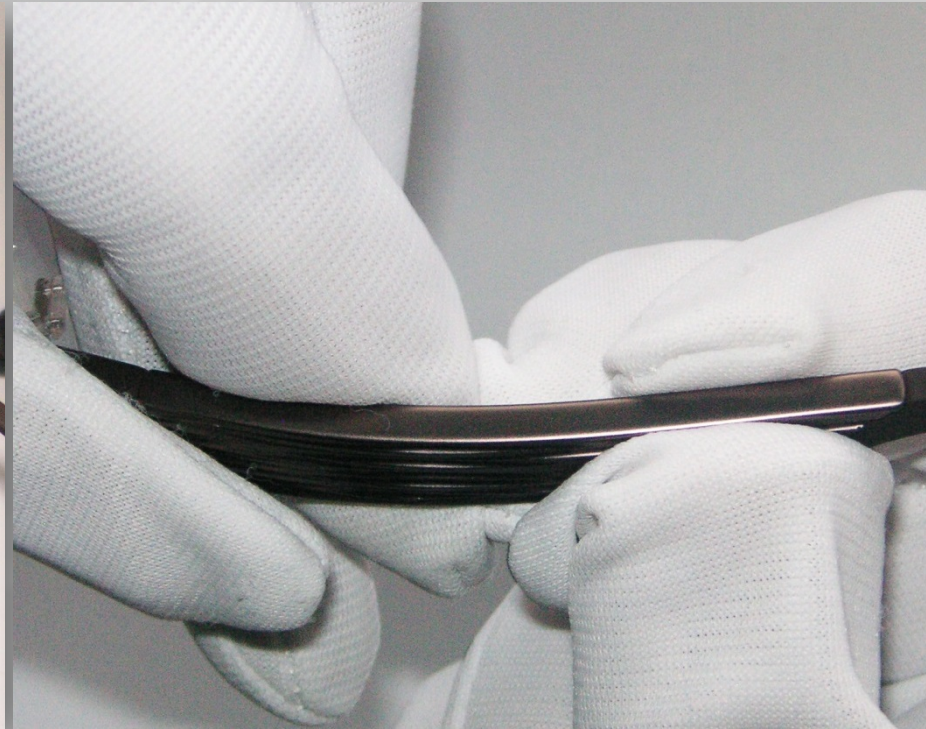
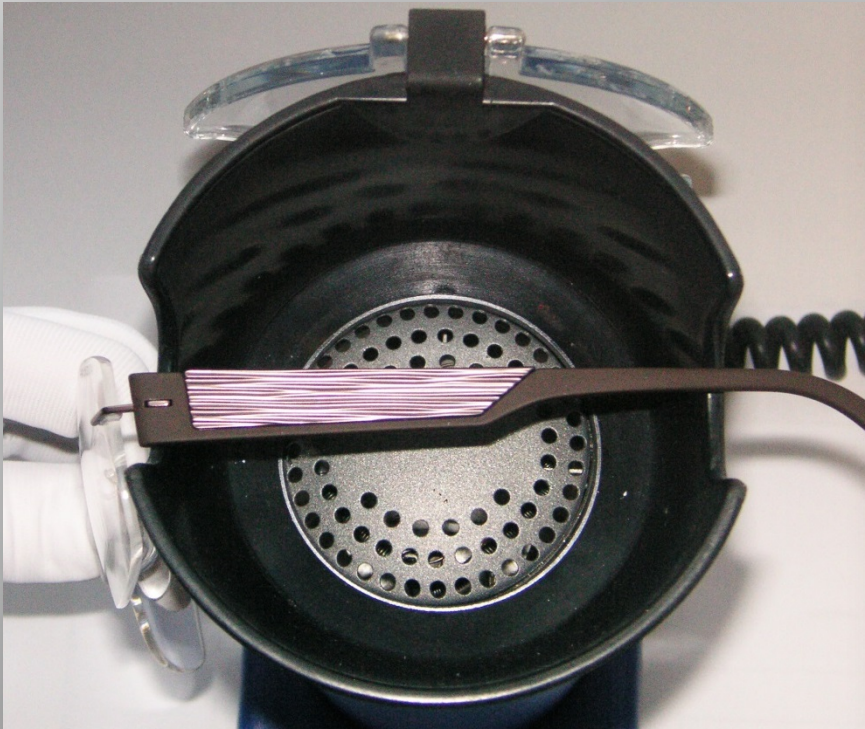


1. Place side part exactly at holes of the SPX temple.



2. Apply counter pressure on frame side part.
3. Press SPX temple into titanium side part.

Adjusting Temple



1. Warm up SPX temple with heater to maximum 70°C (158°F) for approx. 2 minutes.

2. Shape ergonomics of temple and hold at room temperature until temple has cooled down.

Adjusting Temple End Behind Ear



- Titanium inlay inside temple end enables cold adjustment.
- Curve temple in large movements.
- If necessary only slight heating to a maximum of 70°C.
- Do not bend!